



GILDAN[®]

STYLE & COLOUR GUIDE | EUROPE 2024

MAKE YOUR CUSTOMERS LOOK SMART

MAKE YOURSELF LOOK EVEN SMARTER



At Gildan®, we make really smart styles. And we don't mean putting a wireless speaker in the sleeve, we mean making dependable, quality printwear at the lowest possible price.

How do we do it? We operate under a largely vertically integrated manufacturing model, which is our crafty way of saying we own and supervise the lion's share of the process. And when we say majority, we mean it. From procuring the cotton we spin into yarn to packing the final box of shirts onto the delivery truck, we are in command of nearly all the steps involved. This is Gildan®, where smart operations meet honest craftsmanship.

It's why a small Gildan® 5000 will fit like a small Gildan® 5000. And not like a large onesie.

When it comes to product innovation our EZ Print Finish™ features fabric treated with enzyme biotechnology through the textile process, giving a smooth and lint-free surface for a superior finish and optimal printing results. Available in solid colors.

It's why we're able to offer so much variety. From 100% U.S. cotton to 100% polyester, from performance wear to fleece to polos, and from relaxed fits to tailored fits, we have a smart fit for any project.

Whatever your printing requirements are, Gildan® has a garment that looks smart on paper, and even smarter when it comes time to put it on.

Gildan®. Just Smart.

Gildan®, Made With Respect™ and EZ Print Finish™ are trademarks owned by Gildan Activewear SRL.

© 2024 - 2025 Gildan Activewear SRL

Awards, recognition,
certifications
and high fives.



Sedex² Member

Sustainable Apparel Coalition





OUR ESG COMMITMENTS

CLIMATE, ENERGY + WATER



- Reduce Scope 1 and Scope 2 GHG emissions by 30% by 2030 (compared to a 2018 base year)
- Reduce Scope 3 emissions by 13.5% by 2030 (compared to a 2019 base year)
- Reduce water intensity by 20% by 2030 (compared to a 2018 base year)

CIRCULARITY



- By 2025 source 100% sustainable cotton
- By 2027 source 30% recycled polyester or alternative fibers and yarns
- Use 75% recycled and sustainable packaging and trim materials by 2027 Zero manufacturing waste sent to landfill by 2027.

HUMAN CAPITAL MANAGEMENT



- Achieve gender parity for the collective group of employees representing director-level and above positions by 2027.
- By 2028 obtain ISO 45001 certification for 100% of owned and operated facilities.

LONG-TERM VALUE CREATION

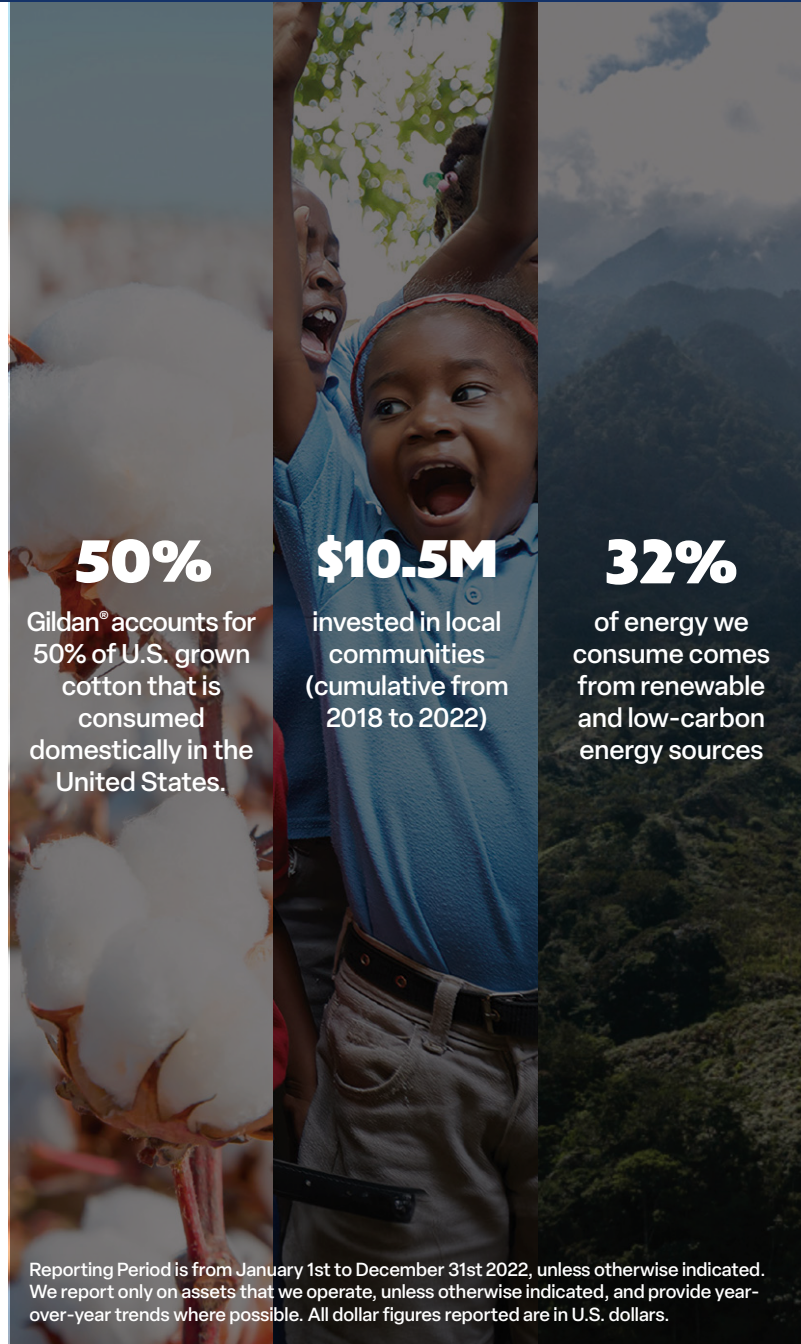


- By 2026 allocate 1% of pre-tax earnings toward community investment initiatives.

TRANSPARENCY AND DISCLOSURE



- Published our first standalone Climate Change Disclosure Report in 2022, We plan to further improve our climate-disclosures over the coming years, while further enhancing and strengthening ESG disclosure across focus areas.



50%

Gildan® accounts for 50% of U.S. grown cotton that is consumed domestically in the United States.

\$10.5M

invested in local communities (cumulative from 2018 to 2022)

32%

of energy we consume comes from renewable and low-carbon energy sources

Reporting Period is from January 1st to December 31st 2022, unless otherwise indicated. We report only on assets that we operate, unless otherwise indicated, and provide year-over-year trends where possible. All dollar figures reported are in U.S. dollars.

RECOGNITIONS + PARTNERSHIPS

Our 2022 recognitions are tributes to Gildan's standards, performance, and strength in making meaningful sustainability advancements.

Dow Jones Sustainability Index

Corporate Knights' – Global 100 Most Sustainable Corporations

CDP's Leadership Band – 2022 Climate Change Disclosures

S&P Global – Sustainability Yearbook Award

GILDAN COLOUR SWATCHES

*Discharge Printing Recommendation:

★ Ideal ▲ Recommended ■ Not Recommended



Natural ■
2309C / 031



Vegas Gold ★
7507C / 019



S. Orange ▲
0 021C / 193



Red Mist ■
1797C / 267



Light Pink ▲
684C / 020



Orchid ★
2635C / 191



NEW! Off White ■
9161C / 4DC



Yellow Haze ▲
7401C / 003



Orange ▲
2026C / 037



True Red ■
1935C / 338



Charity Pink ▲
189C / 300



Violet ■
7452C / 087



Sand ★
7528C / 038



Corn silk ▲
393C / 475



Antique Orange ■
7599C / 252



Red ■
199C / 040



Coral Silk ▲
1777C / 256



Flo Blue ■
2130C / 23G



Tan ★
2316C / 091



Daisy ▲
122C / 098



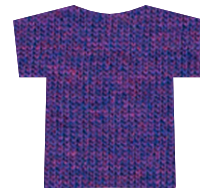
Heather Cardinal ▲
194C / 169



Sport Scarlet Red ■
200C / 774



Azalea ▲
2045C / 071



Lilac ■
7679C / 284



Old Gold ★
2313C / 222



Gold ▲
1235C / 024



Cardinal Red ▲
1955C / 011



Cherry Red ■
187C / 194



Heliconia ▲
213C / 010



Purple ■
2112C / 081



Mustard ▲
7407C / 6GG



Tangerine ★
2025C / 035



Antique Cherry Red ▲
7427C / 246



Garnet ▲
188C / 219



NEW! Pink Lemonade ▲
212C / D9G



Cobalt ■
2746C / 445



T. Orange ★
7592C / 025



Sunset ▲
7578C / 285



Maroon ▲
7644C / 083



Russet ■
497C / 274



Paragon ★
7653C / 41G



Blackberry ■
276C / 278



Chambray ★
544C / 22G



Light Blue ★
543C / 069



Teal Ice ▲
317C / 258



Mint Green ■
345C / 455



Safety Green ■
382C / 188



Pistachio ▲
577C / 168



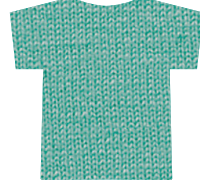
Stone Blue ▲
2164C / 009



Baby Blue ★
292C / 326



Sky ▲
297C / 187



Chalky Mint ■
7472C / 26G



Lime ▲
7488C / 012



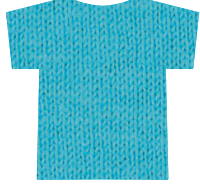
Sage ▲
2406C / 5GG



Indigo Blue ■
5405C / 080



Carolina Blue ▲
659C / 109



Lagoon Blue ■
637C / 21G



Tropical Blue ■
7712C / 280



Irish Green ■
2252C / 167



Prairie Dust/Coyote Brown ★
7497C / 067



Metro Blue ■
2111C / 078



Iris ■
660C / 056



Caribbean Blue ■
312C / 308



Jade Dome ■
7717C / 029



Kiwi ▲
2276C / 186



Brown Savana ▲
7531C / 266



Heather Navy ★
432 / 170



Heather Royal ■
2727C / 218



Heather Sapphire ■
7690C / 217



Antique Jade Dome ■
7715C / 249



Kelly Mist ■
2243C / D2G



Olive ★
448C / 039



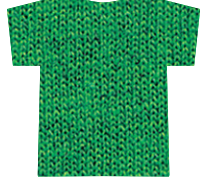
Navy Mist ★
534C / 3G3



Royal ■
7686C / 051



Sapphire ■
641C / 026



Antique Irish Green ■
348C / 248



Kelly Green ■
335C / 017



NEW! Cocoa ▲
7595C / 19G



Navy ★
533C / 032



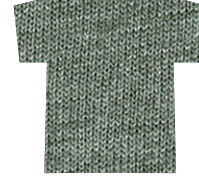
Sport Royal ■
288C / 765



Antique Sapphire ■
7706C / 254



Sport Dark Green ▲
554C / 771



Heather Military Green ▲
416C / 231



Dark Chocolate ★
412C / 105



Sport Dark Navy ▲
289C / 777



Blue Dusk ★
7546C / 076



Midnight ▲
7708C / 286



Forest Green ★
5535C / 033



Military Green ▲
5615C / 106



Black ★
426C / 036



White ■
000C / 030



Ash Grey ■
CG 3C / 093



NEW! Cement ▲
CG 6C / 2G6



Graphite Heather ▲
CG 9C / 516



Charcoal ★
CG 10C / 042



Smoke ★
B7C / 342



Ice Grey ▲
WG1C / 023



Sport Grey ■
CG 7C / 095



Storm Grey ▲
423C / 323



Dark Heather ★
7545C / 108



Tweed ▲
7540C / 276



Pitch Black ★
B6C / 3G9



DECORATOR'S TECHNIQUES

HEAT TRANSFER/DTF

Heat transfer involves combining heat and pressure to transfer images to garments. This is a great option for detailed prints, customization, shorter runs and quick turnaround times.

DISCHARGE

This form of screen printing uses a water-based catalysed activator ink. The discharge agent neutralises the colour in the garment while also adding the new colour. Discharge base (without colourant) will discharge many garments to a soft natural colour.

SCREEN PRINT

Screen printing (or silk screening) is a technique that uses stencils and ink to create designs on garments. It is the most economical method for producing large quantities that involve cotton or cotton-blend garments.

DIRECT TO GARMENT

Direct to garment printing (DTG) is printing on textiles using inkjet technology which usually utilizes specialized water-based inks. DTG is particularly effective for short runs, full colour printing, or for reproducing fine detail.

EMBROIDERY

Embroidery is sewing a design, type or logo onto a garment with special thread. This technique gives garments a higher perceived value and works particularly well on heavier weight garments such as fleece.

LEGEND



Royal ■ — Pantone® Color Code
Color Name — 7686C / 051 — Gildan Color Code

Discharge Printing Recommendation:

- ★ Ideal
- ▲ Recommended
- Not Recommended

Note

The coated Pantone® colour code represents the closest available match for printing reference. Please refer to the actual fabric swatch for true colour matching.

Fiber content may vary by colour, see colour list for more details.

FABRIC GUIDE

GILDAN® SOFTSTYLE™

100% RING SPUN COTTON
153 g/m² (WHITE 144 g/m²)

DECORATING TECHNIQUES

| | |
|-------------------|---|
| DTG | ■ |
| EMBROIDERY | ■ |
| HEAT TRANSFER/DTF | ■ |
| SCREEN PRINT | ■ |
| SUBLIMATION | ■ |

GILDAN® SOFTSTYLE™ CVC

60% RING SPUN COTTON/
40 POLYESTER
156 g/m² (WHITE 153 g/m²)

DECORATING TECHNIQUES

| | |
|-------------------|---|
| DTG | ■ |
| EMBROIDERY | ■ |
| HEAT TRANSFER/DTF | ■ |
| SCREEN PRINT | ■ |
| SUBLIMATION | ■ |

GILDAN® SOFTSTYLE™ POLOS

100% RING SPUN COTTON
177 g/m² (WHITE 172 g/m²)

DECORATING TECHNIQUES

| | |
|-------------------|---|
| DTG | ■ |
| EMBROIDERY | ■ |
| HEAT TRANSFER/DTF | ■ |
| SCREEN PRINT | ■ |
| SUBLIMATION | ■ |

GILDAN® SOFTSTYLE™ MIDWEIGHT

100% RING SPUN COTTON
183 g/m² (WHITE 180 g/m²)

DECORATING TECHNIQUES

| | |
|-------------------|---|
| DTG | ■ |
| EMBROIDERY | ■ |
| HEAT TRANSFER/DTF | ■ |
| SCREEN PRINT | ■ |
| SUBLIMATION | ■ |

GILDAN® SOFTSTYLE™ FLEECE

80% RING SPUN COTTON/
20% POLYESTER
285 g/m² (WHITE 278 g/m²)

DECORATING TECHNIQUES

| | |
|-------------------|---|
| DTG | ■ |
| EMBROIDERY | ■ |
| HEAT TRANSFER/DTF | ■ |
| SCREEN PRINT | ■ |
| SUBLIMATION | ■ |

GILDAN HAMMER® T-SHIRTS

100% RING SPUN COTTON
203 g/m² (WHITE 193 g/m²)

DECORATING TECHNIQUES

| | |
|-------------------|---|
| DTG | ■ |
| EMBROIDERY | ■ |
| HEAT TRANSFER/DTF | ■ |
| SCREEN PRINT | ■ |
| SUBLIMATION | ■ |

Decorating Technique Exceptions Key

■ IDEAL ■ RECOMMENDED ■ NOT RECOMMENDED

GILDAN® HEAVY COTTON™

100% U.S. COTTON
180 g/m² (WHITE 170 g/m²)

DECORATING TECHNIQUES

| | |
|-------------------|---|
| DTG | ■ |
| EMBROIDERY | ■ |
| HEAT TRANSFER/DTF | ■ |
| SCREEN PRINT | ■ |
| SUBLIMATION | ■ |

GILDAN® ULTRA COTTON™

100% U.S. COTTON
203 g/m² (WHITE 193 g/m²)

DECORATING TECHNIQUES

| | |
|-------------------|---|
| DTG | ■ |
| EMBROIDERY | ■ |
| HEAT TRANSFER/DTF | ■ |
| SCREEN PRINT | ■ |
| SUBLIMATION | ■ |

GILDAN® DRYBLEND® T-SHIRTS

50% U.S. COTTON/50%
POLYESTER
186 g/m² (WHITE 176 g/m²)

DECORATING TECHNIQUES

| | |
|-------------------|---|
| DTG | ■ |
| EMBROIDERY | ■ |
| HEAT TRANSFER/DTF | ■ |
| SCREEN PRINT | ■ |
| SUBLIMATION | ■ |

GILDAN® DRYBLEND® POLOS

50% U.S. COTTON/50%
POLYESTER
203 g/m² (WHITE 193 g/m²)

DECORATING TECHNIQUES

| | |
|-------------------|---|
| DTG | ■ |
| EMBROIDERY | ■ |
| HEAT TRANSFER/DTF | ■ |
| SCREEN PRINT | ■ |
| SUBLIMATION | ■ |

GILDAN® DRYBLEND® SWEATS

50% U.S. COTTON/50%
POLYESTER
305 g/m² (WHITE 287 g/m²)

DECORATING TECHNIQUES

| | |
|-------------------|---|
| DTG | ■ |
| EMBROIDERY | ■ |
| HEAT TRANSFER/DTF | ■ |
| SCREEN PRINT | ■ |
| SUBLIMATION | ■ |

GILDAN® HEAVY BLEND™

50% U.S. COTTON/50%
POLYESTER
271 g/m² (WHITE 257 g/m²)

DECORATING TECHNIQUES

| | |
|-------------------|---|
| DTG | ■ |
| EMBROIDERY | ■ |
| HEAT TRANSFER/DTF | ■ |
| SCREEN PRINT | ■ |
| SUBLIMATION | ■ |

Special Tips

DTG: The amount of pre-treat used on fabric blends might differ to the amount used on 100% cotton.

SUBLIMATION: Best results on 100% polyester, use it preferably on white or light colours. Use 50% polyester blends or higher for vintage and faded prints. Always check temperature settings to avoid melting of polyester.

COLOUR CHART

T-Shirts

| | | COLOURS OFFERED | Yellow Haze | Vegas Gold | Natural | Tan | Old Gold | NEW! Off White | Sand | Consilk | Daisy | Gold | Mustard | S. Orange | Sunset | Tangerine | T. Orange | Orange | Antique Orange | Light Pink | Azalea | Heliconia | Charity Pink | Coral Silk | Sport Scarlet Red | Antique Cherry Red | Red | Red Mist | True Red | Cherry Red | Heather Cardinal | Cardinal Red | Maroon | Russet | Orchid | Lilac | Purple | Cobalt | Violet | Flo Blue | Carolina Blue | Heather Royal | Heather Sapphire | Chambray | Light Blue | Sky | Lagoon Blue | | | | | | | | | |
|------------------------------|---------------|-----------------|-------------|------------|---------|-----|----------|-----------------------|------|---------|-------|------|---------|-----------|--------|-----------|-----------|--------|----------------|------------|--------|-----------|--------------|------------|-------------------|--------------------|-----|----------|----------|------------|------------------|--------------|--------|--------|--------|-------|--------|--------|--------|----------|---------------|---------------|------------------|----------|------------|-----|-------------|--|--|--|--|--|--|--|--|--|
| Gildan® Softstyle™ | 980 | S - 3XL | 12 | | | | | | | | | | | | | | | | | | | | | | | | | | | | | | | | | | | | | | | | | | | | | | | | | | | | | |
| | 64000 | S - 5XL | 41 | | | | | | | | | | | | | | | | | | | | | | | | | | | | | | | | | | | | | | | | | | | | | | | | | | | | | |
| | 64000B | YXS - YXL | 18 | | | | | | | | | | | | | | | | | | | | | | | | | | | | | | | | | | | | | | | | | | | | | | | | | | | | | |
| | 64000L | LS - L3XL | 19 | | | | | | | | | | | | | | | | | | | | | | | | | | | | | | | | | | | | | | | | | | | | | | | | | | | | | |
| | 64200 | S - 2XL | 6 | | | | | | | | | | | | | | | | | | | | | | | | | | | | | | | | | | | | | | | | | | | | | | | | | | | | | |
| | 64200L | LS - L2XL | 6 | | | | | | | | | | | | | | | | | | | | | | | | | | | | | | | | | | | | | | | | | | | | | | | | | | | | | |
| | 64400 | S - 3XL | 8 | | | | | | | | | | | | | | | | | | | | | | | | | | | | | | | | | | | | | | | | | | | | | | | | | | | | | |
| | 65000 | S - 5XL | 22 | | | | | | | | | | | | | | | | | | | | | | | | | | | | | | | | | | | | | | | | | | | | | | | | | | | | | |
| | 65000B | YXS - YXL | 11 | | | | | | | | | | | | | | | | | | | | | | | | | | | | | | | | | | | | | | | | | | | | | | | | | | | | | |
| | 65000L | LS - L3XL | 10 | | | | | | | | | | | | | | | | | | | | | | | | | | | | | | | | | | | | | | | | | | | | | | | | | | | | | |
| 67000 | S - 4XL | 5 | | | | | | | | | | | | | | | | | | | | | | | | | | | | | | | | | | | | | | | | | | | | | | | | | | | | | | |
| 67000L | LS - L2XL | 4 | | | | | | | | | | | | | | | | | | | | | | | | | | | | | | | | | | | | | | | | | | | | | | | | | | | | | | |
| 64V00 | S - 3XL | 9 | | | | | | | | | | | | | | | | | | | | | | | | | | | | | | | | | | | | | | | | | | | | | | | | | | | | | | |
| 64V00L | LS - L2XL | 8 | | | | | | | | | | | | | | | | | | | | | | | | | | | | | | | | | | | | | | | | | | | | | | | | | | | | | | |
| Gildan Hammer® | H000 | S - 4XL | 13 | | | | | | | | | | | | | | | | | | | | | | | | | | | | | | | | | | | | | | | | | | | | | | | | | | | | | |
| | H400 | S - 4XL | 4 | | | | | | | | | | | | | | | | | | | | | | | | | | | | | | | | | | | | | | | | | | | | | | | | | | | | | |
| Gildan® Heavy Cotton™ | 5000 | S - 5XL | 52 | | | | | | | | | | | | | | | | | | | | | | | | | | | | | | | | | | | | | | | | | | | | | | | | | | | | | |
| | 5000B | YXS - YXL | 33 | | | | | | | | | | | | | | | | | | | | | | | | | | | | | | | | | | | | | | | | | | | | | | | | | | | | | |
| | 5000L | LS - L3XL | 13 | | | | | | | | | | | | | | | | | | | | | | | | | | | | | | | | | | | | | | | | | | | | | | | | | | | | | |
| | 5100P | 2T - 6T | 8 | | | | | | | | | | | | | | | | | | | | | | | | | | | | | | | | | | | | | | | | | | | | | | | | | | | | | |
| Gildan® Ultra Cotton™ | 2000 | S - 5XL | 52 | | | | | | | | | | | | | | | | | | | | | | | | | | | | | | | | | | | | | | | | | | | | | | | | | | | | | |
| | 2400 | S - 5XL | 21 | | | | | | | | | | | | | | | | | | | | | | | | | | | | | | | | | | | | | | | | | | | | | | | | | | | | | |
| Gildan® DryBlend® | 8000 | S - 3XL | 10 | | | | | | | | | | | | | | | | | | | | | | | | | | | | | | | | | | | | | | | | | | | | | | | | | | | | | |

(*) New colour for style. Not all sizes available in all colours. Please visit gildan.com/eu for exceptions.

Sweats

| | | COLOURS OFFERED | Old Gold | Sand | NEW! Cocoa | Yellow Haze | Daisy | Mustard | S. Orange | Orange | Tangerine | Light Pink | Azalea | NEW! Pink Lemonade | Heliconia | Antique Cherry Red | Cherry Red | Garnet | Maroon | Orchid | Purple | Violet | Carolina Blue | Light Blue | Sky | Sapphire | Royal | Navy | Mint Green | Antique Sapphire | Pistachio | Safety Green | Irish Green | Military Green | Forest Green | Stone Blue | Indigo Blue | Dark Heather | Legion Blue | Paragon | Ash | NEW! Cement | Ring Spoon Sport Grey | Graphite Heather | Sport Grey | Charcoal | Dark Chocolate | Black | White | | | | | | |
|-----------------------------|---------------------------|-----------------|----------|------|-------------------|-------------|-------|---------|-----------|--------|-----------|------------|--------|---------------------------|-----------|--------------------|------------|--------|--------|--------|--------|--------|---------------|------------|-----|----------|-------|------|------------|------------------|-----------|--------------|-------------|----------------|--------------|------------|-------------|--------------|-------------|---------|-----|--------------------|-----------------------|------------------|------------|----------|----------------|-------|-------|--|--|--|--|--|--|
| Gildan® Softstyle™ | SF000 | S - 4XL | 16 | | | | | | | | | | | | | | | | | | | | | | | | | | | | | | | | | | | | | | | | | | | | | | | | | | | | |
| | SF500 | S - 5XL | 25 | | | | | | | | | | | | | | | | | | | | | | | | | | | | | | | | | | | | | | | | | | | | | | | | | | | | |
| | NEW! SF500B | YXS - YXL | 15 | | | | | | | | | | | | | | | | | | | | | | | | | | | | | | | | | | | | | | | | | | | | | | | | | | | | |
| | NEW! SF600 | S - 4XL | 6 | | | | | | | | | | | | | | | | | | | | | | | | | | | | | | | | | | | | | | | | | | | | | | | | | | | | |
| Gildan® DryBlend® | 12000 | S - 2XL | 7 | | | | | | | | | | | | | | | | | | | | | | | | | | | | | | | | | | | | | | | | | | | | | | | | | | | | |
| | 12500 | S - 2XL | 11 | | | | | | | | | | | | | | | | | | | | | | | | | | | | | | | | | | | | | | | | | | | | | | | | | | | | |
| Gildan® Heavy Blend™ | 18000 | S - 5XL | 30 | | | | | | | | | | | | | | | | | | | | | | | | | | | | | | | | | | | | | | | | | | | | | | | | | | | | |
| | 18000B | YXS - YXL | 9 | | | | | | | | | | | | | | | | | | | | | | | | | | | | | | | | | | | | | | | | | | | | | | | | | | | | |
| | 18500 | S - 5XL | 36 | | | | | | | | | | | | | | | | | | | | | | | | | | | | | | | | | | | | | | | | | | | | | | | | | | | | |
| | 18500B | YXS - YXL | 18 | | | | | | | | | | | | | | | | | | | | | | | | | | | | | | | | | | | | | | | | | | | | | | | | | | | | |
| 18600 | S - 5XL | 17 | | | | | | | | | | | | | | | | | | | | | | | | | | | | | | | | | | | | | | | | | | | | | | | | | | | | | |

Not all sizes available in all colours. Please visit gildan.com/eu for exceptions.



GILDAN®
SOFTSTYLE™

GILDAN®
HAMMER

GILDAN®
Heavy Cotton™

GILDAN®
Ultra Cotton™

GILDAN®
DryBlend®

GILDAN®
Heavy Blend™

THE SMART CHOICE FOR YOUR BUSINESS'S BUSINESS

At Gildan®, your business is our business. We strive to help decorators build profitable printwear operations. It's why we make high-quality, affordable garments in a wide range of styles, sizes, colours and fits. No matter what you need, we have a smart choice for you and your customers. And when you make the smart choice, you help us grow our business too, which helps us offer even more selection and even better value. Seems like a pretty smart arrangement, if you ask us.

Gildan®. The Smart Choice.

Discover all our products at
gildan.com/eu

2 New Styles, 4 New Colours & Additional sizes

We're introducing two new styles, four vibrant colours and additional sizes to some of your favourite styles to keep your customers looking their best. With Gildan®, you're not just buying clothes, you're investing in style, comfort and versatility.

NEW! SF600

Cocoa

Off White

Cement

Pink Lemonade



NEW! SF500B



WHAT'S NEW

smart new colours, smart new styles

SF600
Midweight Fleece Adult Full Zip Hoodie



S - 4XL 6 COLOURS

CLASSIC FIT 👕👖

80% RING SPUN COTTON 285 g/m²

20% POLYESTER

SF500B
Midweight Fleece Youth Hoodie



YXS - YXL 15 COLOURS

CLASSIC FIT 👕👖

80% RING SPUN COTTON 285 g/m²

20% POLYESTER

SF000
Midweight Fleece Adult Crewneck



S - 4XL 16 COLOURS

CLASSIC FIT 👕👖

80% RING SPUN COTTON 285 g/m²

20% POLYESTER

SF500
Midweight Fleece Adult Hoodie



S - 5XL 25 COLOURS

CLASSIC FIT 👕👖

80% RING SPUN COTTON 285 g/m²

20% POLYESTER



Full collection shown at
gildan.com/eu

Fibre content varies by colour, see colour list for exceptions on pages 2 - 3. Not all sizes available in all colours. For colour offering, see pages 2 - 3



RING SPUN
SOFT



TEAR AWAY
LABEL



ENHANCED
PRINTABILITY



SMOOTHER
SURFACE



SOFTNESS

65000 Midweight Adult T-Shirt



Model is 6'3" - M - RS Sport Grey

S - 5XL 22 COLOURS
MODERN CLASSIC FIT  
100% RING SPUN COTTON 183 g/m²

65000L Midweight Women's T-Shirt



Model is 5'7" - M - Irish Green

LS - L3XL 10 COLOURS
SEMI-FITTED  
100% RING SPUN COTTON 183 g/m²

65000B Midweight Youth T-Shirt



Model is 4'1" - S - Sage

YXS - YXL 11 COLOURS
MODERN CLASSIC FIT  
100% RING SPUN COTTON 183 g/m²

64000 Adult T-Shirt



Model is 5'10" - M - Plistachio

S - 5XL 41 COLOURS
MODERN CLASSIC FIT  
100% RING SPUN COTTON 153 g/m²

64000L Women's T-Shirt



Model is 5'11" - S - Paragon

S - 3XL 19 COLOURS
SEMI-FITTED  
100% RING SPUN COTTON 153 g/m²

64000B Youth T-Shirt



Model is 4'2" - M - Red

YXS - YXL 18 COLOURS
MODERN CLASSIC FIT  
100% RING SPUN COTTON 153 g/m²



Full collection shown at
gildan.com/eu

Fibre content varies by colour, see colour list for exceptions
on pages 2 - 3. Not all sizes available in all colours. For colour
offering, see pages 2 - 3

980
Adult T-Shirt



Model is 6'3" - M - Teal/Ice

S - 3XL 12 COLOURS
MODERN CLASSIC FIT
100% RING SPUN COTTON 153 g/m²
*EZ Print Finish™ on solid colours only



67000
CVC Adult T-Shirt



Model is 6'0" - M - White

S - 4XL 5 COLOURS
MODERN CLASSIC FIT
60% RING SPUN COTTON
40% POLYESTER 156 g/m²



67000L
CVC Women's T-Shirt



Model is 5'11" - M - Pitch Black

LS - L2XL 4 COLOURS
SEMI-FITTED
60% RING SPUN COTTON
40% POLYESTER 156 g/m²



64V00
Adult V-Neck T-Shirt



Model is 6'0" - M - Navy

S - 3XL 9 COLOURS
MODERN CLASSIC FIT
100% RING SPUN COTTON 153 g/m²



64V00L
Women's V-Neck T-Shirt



Model is 5'11" - M - Azalea

LS - L2XL 8 COLOURS
SEMI-FITTED
100% RING SPUN COTTON 153 g/m²



64400
Adult Long Sleeve T-Shirt



Model is 6'2" - M - RS-Sport Grey

S - 3XL 8 COLOURS
MODERN CLASSIC FIT
100% RING SPUN COTTON 153 g/m²



Full collection shown at
gildan.com/eu

12 T-SHIRTS 2 POLOS
2 TANKS 4 SWEATS

Fibre content varies by colour, see colour list for exceptions on pages 2 - 3. Not all sizes available in all colours. For colour offering, see pages 2 - 3



Experience the blend of comfort and high-end style with the Gildan Hammer® collection. Our H000 Tee, H400 Tee, and the 85800 Polo are the epitome of modern, street-wear styles. Made from ring-spun cotton, these garments feature a high-stitch density that ensures longevity and a sturdy fabric that stands up to the test of time.



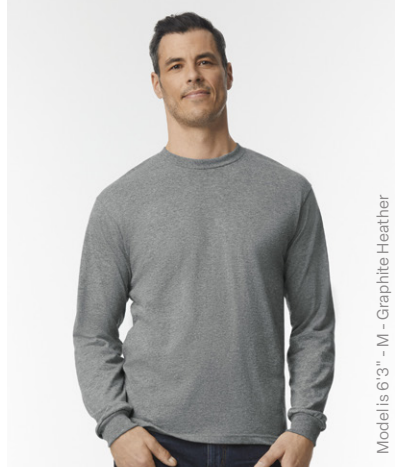
H000
Adult T-Shirt



Model is 6'2" - M - Olive

S - 4XL
13 COLOURS
MODERN CLASSIC FIT
100% RING SPUN COTTON
203 g/m²

H400
Adult Long Sleeve T-Shirt



Model is 6'3" - M - Graphite Heather

S - 4XL
4 COLOURS
MODERN CLASSIC FIT
100% RING SPUN COTTON
203 g/m²

85800
Adult Pique Polo



Model is 5'10" - M - Red

S - 3XL
9 COLOURS
MODERN CLASSIC FIT
100% RING SPUN COTTON
223 g/m²



These styles crafted from 203.0 g/m², 100% U.S. cotton, are durable and available in a wide range of colours. When searching for everyday wear that will keep your clients satisfied, look no further than our classic fits. Gildan® Ultra Cotton® – the name that defines comfort and style.



2000
Adult T-Shirt



Model is 6'2" - M - White

S - 5XL
52 COLOURS
CLASSIC FIT
100% U.S. COTTON
203 g/m²

2400
Adult Long Sleeve T-Shirt



Model is 6'0" - M - Safety Green

S - 5XL
21 COLOURS
CLASSIC FIT
100% U.S. COTTON
203 g/m²



GILDAN® HAMMER®:
2 T-SHIRTS
1 POLO



GILDAN® ULTRA COTTON™:
2 T-SHIRTS

Full collection shown at
gildan.com/eu

Fibre content varies by colour, see colour list for exceptions on pages 2 - 3. Not all sizes available in all colours. For colour offering, see pages 2 - 3

5000
Adult T-Shirt





Model is 5'10" - M - Tangerine

S - 5XL 52 COLOURS
CLASSIC FIT  
100% U.S. COTTON 180 g/m²

5000L
Women's T-Shirt



Model is 5'9" - S - Heather Sapphire

LS - L3XL 12 COLOURS
SEMI-FITTED  
100% U.S. COTTON 180 g/m²

5000B
Youth T-shirt



Model is 4'9" - M - Natural

YXS - XXL 33 COLOURS
CLASSIC FIT  
100% U.S. COTTON 180 g/m²

5100P
Toddler T-Shirt



Model is 3'11" - S - Black

2T - 6T 8 COLOURS
CLASSIC FIT  
100% U.S. COTTON 180 g/m²



8800
Adult Polo



Model is 6'2" - S - M - Carolina Blue

S - 3XL
CLASSIC FIT
50% U.S. COTTON
50% POLYESTER

14 COLOURS
203 g/m²

8800B
Youth Polo



Model is 4'9" - M - Maroon

YS - YXL
CLASSIC FIT
50% U.S. COTTON
50% POLYESTER

6 COLOURS
203 g/m²

8000
Adult T-Shirt



Model is 5'11" - M - Orange

S - 3XL
CLASSIC FIT
50% U.S. COTTON
50% POLYESTER

10 COLOURS
186 g/m²

12500
Adult Hooded Sweatshirt



Model is 5'10" - M - Forest Green

S - 2XL
CLASSIC FIT
50% U.S. COTTON
50% POLYESTER

11 COLOURS
305 g/m²

12000
Adult Crewneck Sweatshirt



Model is 5'7" - S - Navy

S - 2XL
CLASSIC FIT
50% U.S. COTTON
50% POLYESTER

7 COLOURS
305 g/m²



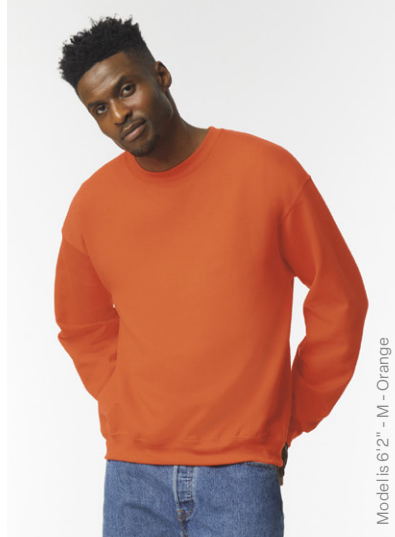
18500
Adult Hooded Sweatshirt



Model is 6'0" - S - M - Antique Cherry Red

S - 5XL 36 COLOURS
CLASSIC FIT
50% U.S. COTTON 271 g/m²
50% POLYESTER

18000
Adult Crewneck Sweatshirt



Model is 6'2" - M - Orange

S - 5XL 30 COLOURS
CLASSIC FIT
50% U.S. COTTON 271 g/m²
50% POLYESTER

18600
Adult Full Zip Hooded Sweatshirt



Model is 5'9" - S - Ash

S - 5XL 17 COLOURS
CLASSIC FIT
50% U.S. COTTON 271 g/m²
50% POLYESTER

18500B
Youth Hooded Sweatshirt



Model is 4'2" - S - Irish Green

YXS - YXL 18 COLOURS
CLASSIC FIT
50% U.S. COTTON 271 g/m²
50% POLYESTER

18000B
Youth Crewneck Sweatshirt



Model is 4'1" - S - Maroon

YXS - YXL 9 COLOURS
CLASSIC FIT
50% U.S. COTTON 271 g/m²
50% POLYESTER

18900
Fleece Stadium Blanket



ONE SIZE 7 COLOURS
50% U.S. COTTON 271 g/m²
50% POLYESTER



Full collection shown at
gildan.com/eu

5 SWEATSHIRTS
1 BLANKET

Fibre content varies by colour, see colour list for exceptions on pages 2 - 3. Not all sizes available in all colours. For colour offering, see pages 2 - 3

FIT GUIDE

Adult fit



MODERN-CLASSIC FIT

Women's fit



SEMI-FITTED

Youth fit



MODERN-CLASSIC FIT



CLASSIC FIT



CLASSIC FIT



CLASSIC FIT

* A-Line - Rounded neckline, tapered short sleeves, relaxed A-Line shape through the body and longer length with wider hems.

SIZING CHART

| STYLE # | XS/LXS | S/LS | M/LM | L/LL | XL/LXL | 2XL/L2XL | 3XL | 4XL | 5XL |
|----------------------|--------|-----------|-----------|-----------|-----------|-----------|-----------|-----------|-----------|
| T-SHIRTS | | | | | | | | | |
| H000/H400 | | 46cmx71cm | 51cmx74cm | 56cmx76cm | 61cmx79cm | 66cmx81cm | 71cmx84cm | 76cmx86cm | |
| 2000/2400 | | 46cmx71cm | 51cmx74cm | 56cmx76cm | 61cmx79cm | 66cmx81cm | 71cmx84cm | 76cmx86cm | 81cmx89cm |
| 5000 | | 46cmx71cm | 51cmx74cm | 56cmx76cm | 61cmx79cm | 66cmx81cm | 71cmx84cm | 76cmx86cm | 81cmx89cm |
| 5000L | | 44cmx65cm | 49cmx66cm | 54cmx69cm | 59cmx71cm | 64cmx72cm | 69cmx74cm | | |
| 64000 | | 46cmx71cm | 51cmx74cm | 56cmx76cm | 61cmx79cm | 66cmx81cm | 71cmx84cm | 76cmx86cm | 81cmx89cm |
| 64V00/64400 | | 46cmx71cm | 51cmx74cm | 56cmx76cm | 61cmx79cm | 66cmx81cm | 71cmx84cm | | |
| 64000L/64V00L | | 43cmx64cm | 46cmx66cm | 50cmx69cm | 52cmx70cm | 58cmx71cm | 62cmx72cm | | |
| 64200 | | 46cmx71cm | 51cmx74cm | 56cmx76cm | 61cmx79cm | 66cmx81cm | | | |
| 64200L | | 43cmx64cm | 46cmx66cm | 50cmx69cm | 52cmx70cm | 58cmx72cm | | | |
| 65000 | | 46cmx71cm | 51cmx74cm | 56cmx76cm | 61cmx79cm | 66cmx81cm | 71cmx84cm | 76cmx86cm | 81cmx89cm |
| 65000L | | 43cmx65cm | 48cmx66cm | 53cmx69cm | 58cmx71cm | 64cmx72cm | 69cmx74cm | | |
| 8000 | | 46cmx71cm | 51cmx74cm | 56cmx76cm | 61cmx79cm | 66cmx81cm | 71cmx84cm | | |
| 67000 | | 46cmx71cm | 51cmx74cm | 56cmx76cm | 61cmx79cm | 66cmx81cm | 71cmx84cm | 76cmx86cm | |
| 67000L | | 42cmx68cm | 47cmx69cm | 52cmx70cm | 57cmx72cm | 62cmx73cm | | | |
| 980 | | 46cmx71cm | 51cmx74cm | 56cmx76cm | 61cmx79cm | 66cmx81cm | 71cmx84cm | | |

| STYLE # | 2T | 3T | 4T | 5T | 6T | YXS | YS | YM | YL | YXL |
|-----------------------|-----------|-----------|-----------|-----------|-----------|-----------|-----------|-----------|-----------|-----------|
| YOUTH T-SHIRTS | | | | | | | | | | |
| 5000B | | | | | | 41cmx52cm | 43cmx56cm | 46cmx60cm | 48cmx64cm | 51cmx67cm |
| 64000B | | | | | | 36cmx46cm | 41cmx52cm | 43cmx56cm | 46cmx60cm | 48cmx64cm |
| 65000B | | | | | | 36cmx46cm | 41cmx52cm | 43cmx56cm | 46cmx60cm | 48cmx64cm |
| 5100P | 28cmx38cm | 30cmx41cm | 33cmx43cm | 36cmx46cm | 38cmx48cm | | | | | |

| STYLE # | XS/LXS/YXS | S/LS/YS | M/LM/YM | L/LL/YL | XL/LXL/YXL | 2XL/L2XL | 3XL | 4XL | 5XL |
|---------------|------------|-----------|-----------|-----------|------------|-----------|-----------|-----------|-----|
| POLOS | | | | | | | | | |
| 85800 | | 52cmx71cm | 55cmx75cm | 57cmx78cm | 60cmx80cm | 64cmx83cm | 67cmx85cm | | |
| 8800 | | 48cmx71cm | 53cmx75cm | 58cmx77cm | 64cmx80cm | 69cmx83cm | 74cmx84cm | | |
| 8800B | | 41cmx50cm | 43cmx55cm | 46cmx60cm | 48cmx65cm | | | | |
| 64800 | | 52cmx71cm | 55cmx75cm | 57cmx78cm | 60cmx80cm | 64cmx83cm | 67cmx85cm | 71cmx88cm | |
| 64800L | | 43cmx65cm | 46cmx67cm | 51cmx70cm | 55cmx73cm | 59cmx75cm | | | |

| STYLE # | XS/LXS/YXS | S/LS/YS | M/LM/YM | L/LL/YL | XL/LXL/YXL | 2XL/L2XL | 3XL | 4XL | 5XL |
|----------------------|------------|-----------|-----------|-----------|------------|-----------|-----------|-----------|-----------|
| SWEATS | | | | | | | | | |
| 12000/12500 | | 51cmx69cm | 56cmx71cm | 61cmx74cm | 66cmx76cm | 71cmx79cm | | | |
| 18000/18500 | | 51cmx69cm | 56cmx71cm | 61cmx74cm | 66cmx76cm | 71cmx79cm | 76cmx81cm | 81cmx84cm | 86cmx86cm |
| 18600 | | 49cmx69cm | 54cmx71cm | 59cmx74cm | 64cmx76cm | 69cmx79cm | 74cmx81cm | 79cmx84cm | 82cmx86cm |
| 18000B/18500B | 41cmx50cm | 43cmx54cm | 46cmx57cm | 48cmx61cm | 51cmx65cm | | | | |
| SF000/SF500 | | 51cmx71cm | 56cmx74cm | 61cmx76cm | 66cmx79cm | 71cmx81cm | 76cmx84cm | 81cmx86cm | 86cmx89cm |
| SF500B NEW! | 41cmx51cm | 43cmx55cm | 46cmx58cm | 48cmx62cm | 51cmx66cm | | | | |
| SF600 NEW! | | 49cmx71cm | 54cmx74cm | 59cmx76cm | 64cmx79cm | 69cmx81cm | 74cmx84cm | 79cmx86cm | |

| STYLE # | SIZE | | | | | | |
|------------------|------|-----------------------|--|--|--|--|--|
| ACCESSORY | | | | | | | |
| 18900 | | One Size: 127cmx152cm | | | | | |

* Measurements shown are chest X body

Gildan®, Gildan Hammer®, Gildan® DryBlend® and Made With Respect® are registered trademarks owned by Gildan Activewear SRL. Gildan® Heavy Blend™, Gildan® Made With Respect™, Gildan® Heavy Cotton™, Gildan® Softstyle™, Gildan® Ultra Cotton™ and EZ Print Finish™ are trademarks owned by Gildan Activewear SRL.

Cotton USA™ is a trademark of Cotton Council International.

Oeko-Tex® is a trademark owned by ÖTI - Institut Für Ökologie, Technik und Innovation GmbH.

Sustainable Apparel Coalition® is a trademark owned by Sustainable Apparel Coalition, Inc.

© 2024 – 2025 Gildan Activewear SRL | Visit gildan.com/eu



[GILDAN.COM/EU](https://www.gildan.com/eu)